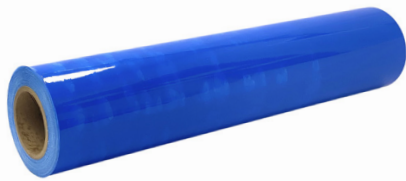


Product Data Sheet

Hard Surface Protection Film

Product Description:

This temporary floor protection or multi-surface film provides protection during painting, remodeling, relocations or other high traffic situations. The many variations in floor materials; wood, natural stone, ceramics, etc. and the finishing techniques for each, make it imperative that the user determines its suitability.



Backing:	Polyethylene Film
Adhesive:	Acrylic Adhesive
Color(s):	Blue
Tack Level	Low
Tensile Strength:	11 lbs/sq. in (PSTC-131)
Adhesion to Steel:	2.0-4.0 oz/in (PSTC-101)
Total Thickness:	3 Mil (PSTC-133)
Elongation (%)	325%
Country of Origin	USA

Item ID Numbers

Here: HSPF24200L,
HSPF24500L, HSPF36200L,
HSPF36500L

Wrap-Tite, Inc.
6200 Cochran Rd.
Solon, Ohio 44139

Toll Free: 888-WRAP-TITE

Fax: 440-349-5432
www.wraptite.com -
info@wraptite.com

We believe the statements and information contained herein are accurate but are to be used only as general guidelines and are not warrants or guarantees because of the variety of possible uses. THERE IS NO WARRANTY OF FITNESS FOR A PARTICULAR PURPOSE. THE BUYER MUST TEST THE SUITABILITY FOR EACH INTENDED APPLICATION BEFORE USING. WRAPTITE WILL NOT BE LIABLE FOR DAMAGES IN EXCESS OF THE PURCHASE PRICE OF ITS PRODUCTS OR FOR INCIDENTAL OR CONSEQUENTIAL DAMAGES.